

# Acworth Youth Basketball League Manual



[www.acworthbasketball.org](http://www.acworthbasketball.org)

# Table of Contents

Mission Statement.....Page 1

Note from the Coordinator.....Page 2

Policies and Procedures.....Page 3

- I. Registration Information
- II. Eligibility
- III. Skills Assessment
- IV. Uniform and Equipment
- V. Playing Rules
- VI. Game Day Reminders
- VII. Final Standings
- VIII. Conduct
- IX. Facility Addresses
- X. Inclement Weather
- XI. FAQ

Volunteer Coaches.....Page 8

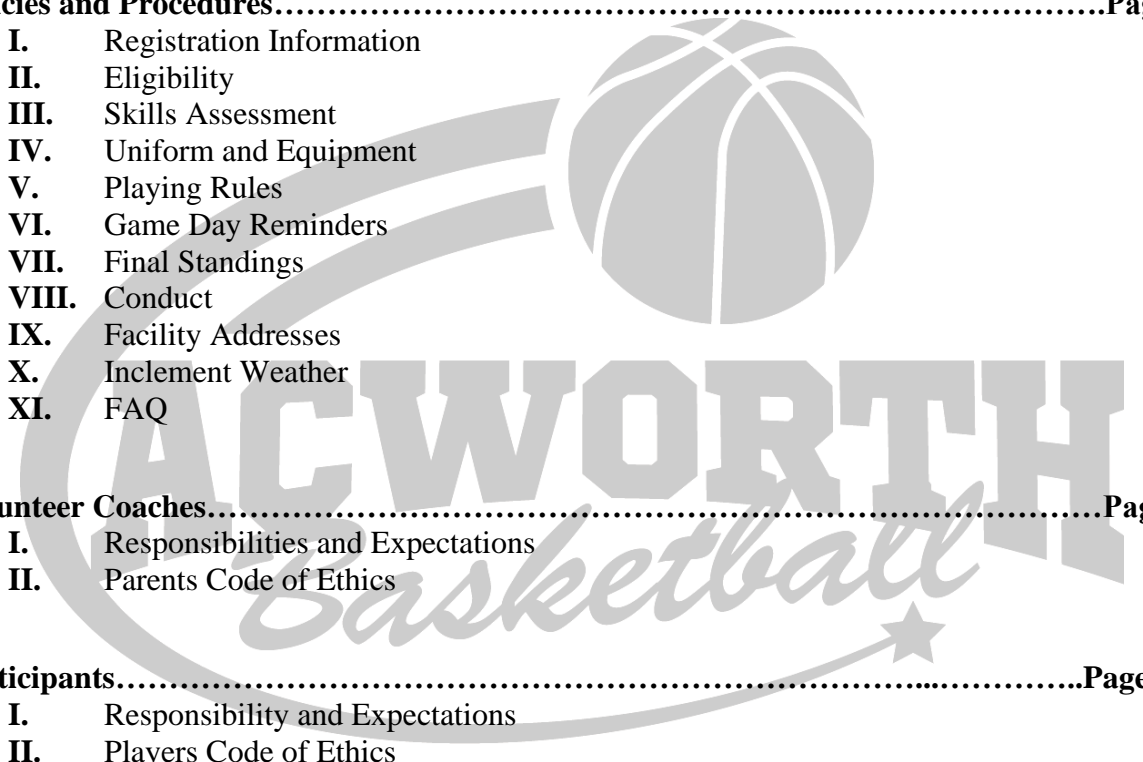
- I. Responsibilities and Expectations
- II. Parents Code of Ethics

Participants.....Page 10

- I. Responsibility and Expectations
- II. Players Code of Ethics
- III. Corrective Action Policy
- IV. Calendar of Events

Administrators and Officials.....Page 11

- I. Responsibility and Expectations
- II. Administers Code of Ethics



# Acworth Youth Basketball

## League Mission

*“The purpose of the Acworth Youth Basketball League is to provide a recreational activity with the emphasis upon personal enjoyment, sportsmanship, and a positive learning experience.”*



## Note from the Coordinator

On behalf of myself and the Acworth Parks, Recreation and Community Resource Department, we would like to say THANK YOU for taking part in our Acworth Youth Basketball League. Without the help and support of parents and volunteers we would not be able to run a successful program that fosters the development of positive character traits through an encouraging, constructive and supportive learning environment.

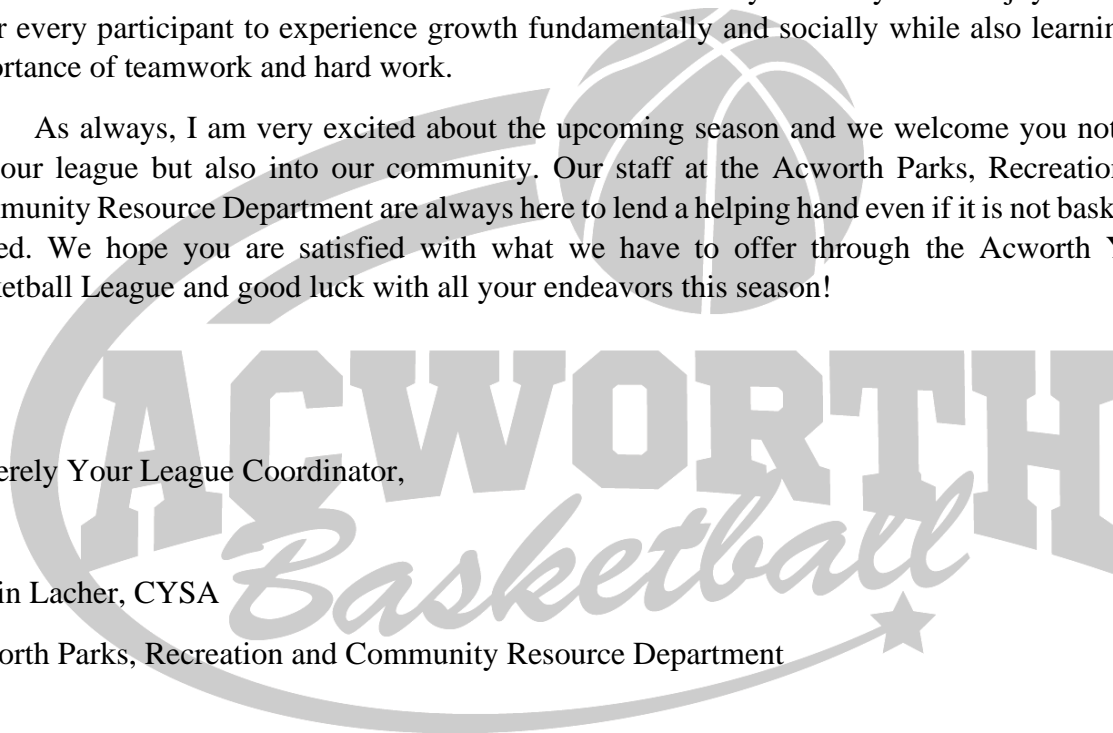
Our participants are heavily influenced by the words and actions of the spectators, coaches, officials and administrators and without everyone's help we cannot preserve the integrity of the league. We strive to maintain a fun and safe recreational activity for everyone to enjoy! Our hope is for every participant to experience growth fundamentally and socially while also learning the importance of teamwork and hard work.

As always, I am very excited about the upcoming season and we welcome you not only into our league but also into our community. Our staff at the Acworth Parks, Recreation and Community Resource Department are always here to lend a helping hand even if it is not basketball related. We hope you are satisfied with what we have to offer through the Acworth Youth Basketball League and good luck with all your endeavors this season!

Sincerely Your League Coordinator,

Edwin Lacher, CYSA

Acworth Parks, Recreation and Community Resource Department



# Policies and Procedures

## **I. Registration**

- A.** The number of participants that can be accepted by the Acworth Youth Basketball League is determined by the amount of gymnasium time allocated by the Acworth Community Center and Cobb County Schools as well as available coaches for that division.
- B.** All registration information will be maintained by the City of Acworth.
- C.** Refund Information: A full refund will be given to any player who requests to be removed from the Acworth Youth Basketball League before the registration deadline.

## **II. Eligibility**

- A.** The age control date for all age divisions will be September 1<sup>st</sup> of the current year.
- B.** All participants must have a birth certificate on file with the Acworth Parks, Recreation and Community Resource Department in order to participate in the Acworth Youth Basketball League.
- C.** The eight (8) age divisions for boys and girls are as follows:
  - i.** 5 & 6 Co-ed
  - ii.** 7 & 8 Boys
  - iii.** 7 & 8 Girls
  - iv.** 9 & 10 Boys
  - v.** 9 & 10 Girls
  - vi.** 11 & 12 Boys
  - vii.** 6<sup>th</sup>- 8<sup>th</sup> Grade Girls
  - viii.** 13 & 14 Boys
- D.** A participant is allowed to compete in only one age division.
- E.** All participants must play in their designated divisions based upon the age control date of September 1.
- F.** A player will be placed on a waiting list when the league for that player's age group is full. A player will be granted a spot in the league if spots open in his/her age group.
- G.** No player will be drafted if the league registration fee has not been paid in full prior to draft.
  - Players who applied to the league for hardship or have agreed to a payment schedule worked out with the League Coordinator are exempt.
- H.** No participant will be permitted to participate in the league play for the season following the close of registration except in the following circumstances:

- i. A player can be added if a team is short of the maximum number of players after the draft, loses a player to injury, player relocation from the area, or disciplinary action by the parents (removal from the league). In the event a team has room and requests to add a potential participant, they must take names from the waiting list for their age division in the order. All additions will be at the discretion of the League Coordinator.

### **III. Uniform and Equipment**

- A. The city will provide one jersey and one pair of shorts that must be worn in *all* league play. The purchasing of socks and sneakers will be the responsibility of the player or guardian.
  - Players are **not permitted** to modify their jersey or shorts in any way.
- B. No jewelry (watches, rings, bracelets, chains, earrings, etc.) is permitted during league practice or league games. Hair clips or bands will be allowed if made of rubber or fabric.
- C. Only those players and coaches with tennis shoes or basketball shoes will be permitted on the playing court.
- D. The city will provide coaches with two basketballs prior to the start of each practice. The coach will return them immediately after practice to the front desk. The league will also provide game day basketballs.
  - i. Game balls will be furnished prior to the start of each game and collected by the scorekeeper at the conclusion of the day's play.
  - ii. Game balls are NOT to be removed from the gymnasium except by league staff.

### **IV. Game Day Reminders**

- The HOME TEAM listed should wear their WHITE/LIGHTEST COLOR JERSEY
- The VISITING TEAM listed should wear their COLOR/DARKEST COLOR JERSEY
- The HOME TEAM shall always sit on the RIGHT SIDE of the scorer's table.
- The VISITING TEAM shall always sit on the LEFT SIDE of the scorer's table.
- The mandatory warm-up period prior to each game and during halftime shall be 3 minutes.
- Teams should always warm-up prior to the game on the goal on the opposite end as their bench area.
- Teams should always warm-up at half-time on the goal on the same end as their bench area.
- Player jerseys shall always remain tucked, and shorts worn at the waist. The officials have the discretion to remove a player from the game until corrected.
- Only APPROVED coaches are allowed on the bench during games. A maximum of 2 per team. Only one coach is permitted to stand during game play.

- Coaches are encouraged to introduce themselves to the officials & scorekeepers prior to each game and be sure to review any questions for clarification as they pertain to the rules or game.
- Parents and Spectators shall use **POSITIVE** reinforcement for all coaches, officials, and players!
- All basketballs not being used during the game should be held by players, coaches, and spectators to eliminate potential game interruption.
- Children must always be supervised; this includes the walking track above the gymnasium at the Acworth Community Center.

## **V. Final Standings**

- A.** The first team in each division (of the regular season) will receive regular season champion awards and top seed in post season tournament.
- B.** If there are two or more teams that share the same record, the league will defer to tiebreaker(s).
  - The first tiebreaker is head-to-head results.
  - The second tiebreaker is the team with the highest point differential.
  - The third tiebreaker will be the team that allowed the least amount of points for the season.
  - If a tie still exists between teams, a coin toss will determine seed for post season tournament.

## **VI. Playing Rules**

- A.** All games shall be played in accordance with the league-modified Georgia High School Athletic Association rules unless otherwise stated in this manual.
- B.** Only the head coach will be permitted to question a referee's call. Only possible rules mistake can be questioned (**no judgment calls can be questioned**). If a coach believes a mistake has been made, he/she may call a time out and question the referee. If the coach is correct, his team will not be charged with the time out. If the coach is incorrect then his team will be charged with the time out. If the team has no remaining time outs, the team will be charged with a technical foul (delay of the game).
- C.** Referees shall judge the degree or strictness of rules interpretation as requested by the city.
- D.** Each game will begin at the scheduled time unless the previous game overlaps. If this occurs, the game will begin three (3) minutes after the completion of the previous game.
- E.** The first scheduled team on game day will be given a ten (10) minute grace period.
  - Game play will begin immediately if both teams have the required number of players.

- After the ten (10) minute grace period, the team failing to place five (5) players on the court shall be listed as a forfeit.
- F.** All coaches are required to play every player at least one full, uninterrupted quarter in the 1<sup>st</sup> half and one full, uninterrupted quarter in the 2<sup>nd</sup> half.
- Example: Entire 1<sup>st</sup> and 3<sup>rd</sup> quarter, entire 2<sup>nd</sup> and 3<sup>rd</sup> quarter, etc.
  - If a team does not abide by this rule, they will receive a technical foul.
  - All players must check in at the scorer's table every time they enter the game, including at the start of a quarter.
  - If a player arrives at a game after completion of the first quarter, the coach has the prerogative to limit the playing time of that player for the remainder of that half.
- G.** If a player acquires three or more personal fouls in his/her first quarter of uninterrupted game play, a coach may choose to remove the player from the game.
- H.** If a player is disruptive or misses practices, the coach shall notify the parents/guardian of the child involved.
- After the initial warning, the coach shall notify the League Coordinator. With approval of the League Coordinator, the coach can limit the playing time of that player during the next scheduled game.
  - A written notice will be placed in the scorebook. Prior to the start of the game, both coaches will be notified of the player in question.
- I.** There will be a one (1) minute break between quarters and a three (3) minute break at half.
- J.** During a free throw, players in marked lane spaces may enter the lane when the ball is released by the shooter.
- i.** Free throw shooter cannot enter the lane until the ball makes contact with the rim or backboard.
- K.** Each team will be given five (4) time outs per game: three (2) 60 seconds and two (2) 30 seconds.
- L.** The league will provide a scorekeeper and clock keeper for all age divisions.
- M.** Coaches must submit a roster sheet to the scorekeeper prior to scheduled game time. Failure to do so will result in a technical foul - delay of game.
- N.** Supervision of the game will be under the referee, city representative and/or the Recreation Coordinator.
- O.** Overtime Rule- two minutes will be allocated if there is a tie after four quarters of play. Clock rules will be the same as the final two minutes of regulation.
- i.** If no winner is determined after the first overtime period, we will change to a one-minute overtime period for the second overtime period.
  - ii.** If no winner is determined after a second overtime period, the third overtime period will be untimed and determined by sudden death (first team to score wins).
  - iii.** Each team will be given one 30 second timeout per overtime period.
    - No timeouts will rollover



DIVISION	GOAL HEIGHT	BALL SIZE	FREE THROWS	LANE VIOLATION	DEFENSE/BACKCOURT PRESSURE	FULL COURT PRESSING	MERCY RULE	LENGTH OF GAME, TIME-OUTS & MISC. PROVISIONS
<b>5 &amp; 6 CO-ED</b>	8'	27.5"	10' <ul style="list-style-type: none"> <li>Players in marked lane spaces may enter lane when ball is released by shooter</li> <li>Free throw shooter cannot enter lane until the ball makes contact with the rim or backboard.</li> </ul>	10 seconds	<ul style="list-style-type: none"> <li>man-to-man only <ul style="list-style-type: none"> <li>switching is NOT permitted</li> </ul> </li> <li>no double teaming</li> <li>no trapping</li> <li>On transition defense, the defensive team must take a defensive position behind the three point line of the goal they are defending. <ul style="list-style-type: none"> <li>Once the offensive team has crossed half court, the defense will be allowed to come out of the three point line after a 10 second count by the official.</li> </ul> </li> </ul>	Not allowed at any time	None	<ul style="list-style-type: none"> <li>Four (4) 8-minute quarters.</li> <li>The offensive team MUST wait until the defensive team has taken up position behind the 3-point line prior to taking the ball past half court. NO FAST BREAKS!</li> <li>Coaches will be permitted on the court to help instruct players during the game, but they must remain outside the 3-point arc.</li> <li>No score will be kept.</li> <li>Clock is ONLY stopped for: <ul style="list-style-type: none"> <li>Time-outs</li> <li>On referee signal</li> </ul> </li> </ul>
<b>7 &amp; 8 GIRLS &amp; BOYS</b>	9'	28.5"	12' <ul style="list-style-type: none"> <li>Players in marked lane spaces may enter lane when the ball is released by shooter.</li> <li>Free throw shooter cannot enter lane until the ball makes contact with the rim or backboard.</li> </ul>	5 seconds	<ul style="list-style-type: none"> <li>man-to-man defense allowed. <ul style="list-style-type: none"> <li>switching is NOT permitted.</li> </ul> </li> <li>Zone defense is allowed.</li> <li>no double teaming.</li> <li>no trapping.</li> <li>Can only stop a fast break in the backcourt if full court press is allowed.</li> </ul>	<ul style="list-style-type: none"> <li>Last two (2) minutes of the fourth quarter <ul style="list-style-type: none"> <li>If at any time during the last two minutes of the game, a team goes up by more than 10 points, no full court pressure will be allowed.</li> <li>The first time a team is found in violation of the full court press rule during the game, it will be given a verbal warning by the referee.</li> <li>Each time after the first offense, the team in violation will be given a bench technical foul (delay of game) and the opposing team will be awarded two free throws and possession of the ball following the free throws.</li> </ul> </li> </ul>	10 points	<ul style="list-style-type: none"> <li>Four (4) 10-minute quarters</li> <li>Clock is ONLY stopped for: <ul style="list-style-type: none"> <li>Time-outs</li> <li>On referee signal</li> <li>During the last two (2) minutes of the fourth (4<sup>th</sup>) quarter unless a team is up by 10 or more points.</li> </ul> </li> <li>Fast breaks are allowed at any point during the game.</li> </ul>
<b>9 &amp; 10 GIRLS &amp; BOYS</b>	10'	28.5"	13' <ul style="list-style-type: none"> <li>Players in marked lane spaces may enter lane when the ball is released by shooter.</li> <li>Free throw shooter cannot enter lane until the ball makes contact with the rim or backboard.</li> </ul>	3 seconds	<ul style="list-style-type: none"> <li>Man-to-man defense allowed. (Switching is permitted).</li> <li>Zone defense allowed.</li> </ul>	<ul style="list-style-type: none"> <li>Last two (2) minutes of the fourth quarter. <ul style="list-style-type: none"> <li>If at any time during the last two minutes of the game, a team goes up by 10+ points, no full court pressure will be allowed.</li> <li>The first time a team is found in violation of the full court press rule during the game, it will be given a verbal warning by the referee.</li> <li>Each time after the first offense, the team in violation will be given a bench technical foul (delay of game) and the opposing team will be awarded two free throws and possession of the ball following the free throws.</li> </ul> </li> </ul>	10 points	<ul style="list-style-type: none"> <li>Four (4) 10-minute quarters</li> <li>Clock is ONLY stopped for: <ul style="list-style-type: none"> <li>Time-outs</li> <li>On referee signal</li> <li>During the last two (2) minutes of the fourth (4<sup>th</sup>) quarter unless a team is up by 10 or more points.</li> </ul> </li> <li>Fast breaks are allowed at any point during the game.</li> </ul>

DIVISION	GOAL HEIGHT	BALL SIZE	FREE THROWS	LANE VIOLATION	DEFENSE/BACKCOURT PRESSURE	FULL COURT PRESSING	MERCY RULE	LENGTH OF GAME, TIME-OUTS & MISC. PROVISIONS
<b>11 &amp; 12, 13 &amp; 14, BOYS</b>  <b>6<sup>TH</sup> – 8<sup>TH</sup> GIRLS</b>	10'	29.5" BOYS  28.5" GIRLS	15'  <ul style="list-style-type: none"> <li>• Players in marked lane spaces may enter lane when the ball is released by shooter. Free throw shooter cannot enter lane until the ball makes contact with the rim or backboard.</li> </ul>	3 seconds	<ul style="list-style-type: none"> <li>• Man-to-man defense allowed.</li> <li>• Switching is allowed.</li> <li>• Zone defense allowed.</li> </ul>	<ul style="list-style-type: none"> <li>• Full court pressing is allowed except if there is a lead of 15 points or greater at any time during the game.               <ul style="list-style-type: none"> <li>○ The first time a team is found in violation of the full court press rule during the game, it will be given a verbal warning by the referee.</li> <li>○ Each time after the first offense, the team in violation will be given a bench technical foul (delay of game) and the opposing team will be awarded two free throws and possession of the ball following the free throws.</li> </ul> </li> </ul>	15 points	<ul style="list-style-type: none"> <li>• Four (4) 10-minute quarters</li> <li>• Clock is ONLY stopped for:               <ul style="list-style-type: none"> <li>○ Time-outs</li> <li>○ On referee signal</li> <li>○ During the last two (2) minutes of the fourth (4<sup>th</sup>) quarter unless a team is up by 15 or more points.</li> </ul> </li> <li>• Fast breaks are allowed at any point during the game.</li> </ul>

## **VII. Conduct**

- A.** No person other than scheduled teams, coaches, referees, school, or league officials are allowed on gymnasium floors during practices or games.
  - Coaches and league officials reserve the right to ask unauthorized personnel to vacate the floor.
- B.** No rowdy behavior, profane language, alcoholic beverages, weapons, drugs, tobacco, intoxication, or display of unsportsmanlike conduct will be tolerated in this league, from the players, coaches, parents, or visitors.
  - Violation of any of the previous rules could potentially result in expulsion from the basketball league.
- C.** All spectators are required to sit on the opposite side of the court from the team benches.
- D.** During practice, if a player uses physical aggression towards another player, coach, etc. or is disruptive during practice, it will be reported to the League Coordinator following the incident(s).
  - i.** The League Coordinator will determine if any action is required including suspension of game(s) or expulsion from the league.
- E.** All flagrant fouls (discretion of referee) and behavior related technical fouls on the players and/or coaches will be reviewed by the League Coordinator within 48 hours following the game.
  - i.** The League Coordinator will determine if any action is required including suspension of game(s) or expulsion from the league.
- F.** Any player or coach ejected from the game for any type of unsportsmanlike conduct will sit out the next scheduled game and may possibly be expelled for the season.
- G.** If a player or coach is ejected from a second game during the same season, he/she is expelled from the league for the remainder of the season.
- H.** A fan that is disruptive to the flow of the game (e.g., game must stop because of actions of individual) or threatens anyone verbally or physically will be asked to leave the gym either by the referee, league official, city authority or local law enforcement. That fan can be expelled for the remainder of the season.
- I.** Any player or coach threatening a referee physically or verbally will be ejected from the game and must leave the gym immediately. The player or coach will meet with the League Coordinator for a hearing. The League Coordinator reserves the right to remove that individual from the league after the first offense. No refund will be provided to the player.
- J.** If a player or parent has a grievance against a coach, they must submit their grievance in writing via email or mail to the League Coordinator. Please allow up to 72 hours for the League Coordinator to respond.

## **VIII. Facility Addresses**

Acworth Community Center  
4361 Cherokee St  
Acworth, GA 30101

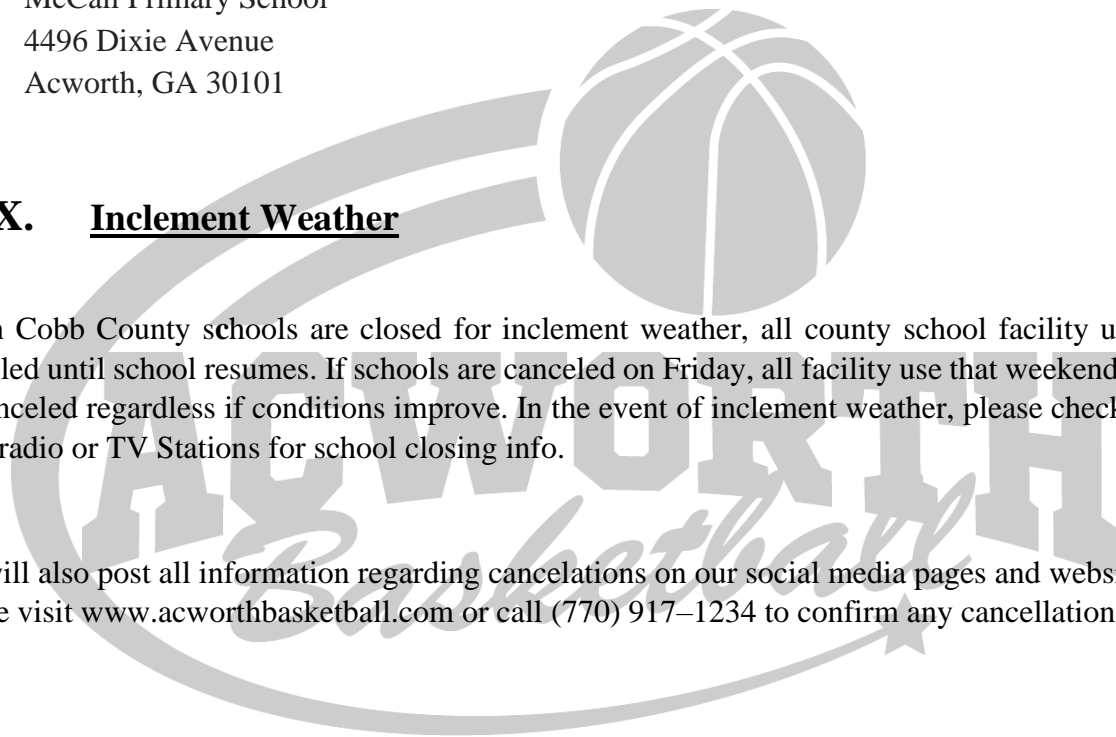
Awtrey Middle School  
3400 Old 41 Hwy NW  
Kennesaw, GA 30144

McCall Primary School  
4496 Dixie Avenue  
Acworth, GA 30101

## **IX. Inclement Weather**

When Cobb County schools are closed for inclement weather, all county school facility use is canceled until school resumes. If schools are canceled on Friday, all facility use that weekend will be canceled regardless if conditions improve. In the event of inclement weather, please check our local radio or TV Stations for school closing info.

We will also post all information regarding cancellations on our social media pages and website. Please visit [www.acworthbasketball.com](http://www.acworthbasketball.com) or call (770) 917-1234 to confirm any cancellations.



## **F.A.Q.**

### **How do I register?**

Registration will only be taken online at [www.acworthbasketball.com](http://www.acworthbasketball.com), or in person at the Acworth Community Center.

### **Can I register my child at assessments or just show up there and then register after?**

No. All registration must be completed prior to the start of assessments. The registration deadline will end at least 24 hours prior to assessments.

### **What if I need to change uniform sizes?**

Changes will be made at no charge if requested before the registration deadline. After the registration deadline, the cost must be paid by the player's parent or guardian.

### **When will game schedules be published?**

Game schedules will be published by the Friday before Thanksgiving.

### **When I have a concern or problem, who do I contact?**

The League Coordinator. If the League Coordinator is not onsite during a game when a concern or problem arises, please contact the scorekeepers who will then reach out to the League Coordinator. If during a practice, please reach out to the Customer Experience Team at the Front Desk of the Acworth Community Center.

### **Do you prorate the registration fee for families with multiple kids?**

No, fees help to cover the cost of each kid's uniform, gym rental fees, officiating & scorekeeper costs.

### **How can I receive financial assistance to register my child?**

Assistance is available on a first come, first serve basis and is only available to City of Acworth residents only. Please call 770-917-1234 for more information.

### **Can my child play up an age division?**

No, our age cutoff date is September 1.

### **How many recreational players and teams will there be?**

In a typical season we have over 400 participants and over 50 teams. Most age groups have 6 or more teams.

### **Is there a mandatory playing time rule?**

Yes, see our playing rules within the manual for a specific explanation.

**Will there be a Post Season Tournament at the end of the regular season?**

Yes, all teams go into the post season tournament except the 5&6 co-ed division.

**When will my team practice?**

Practice days/times could be on any day of the week. Typically, teams will have one weeknight practice per week before games begin. When the games begin, the teams will get one weeknight practice and games will be played on Saturdays. Practice times are assigned based on the head coach's requests and gym availability. Younger age groups tend to practice earlier, and older age groups tend to practice later. The earliest start time is 6 PM and the latest start time is 8:30 PM.

**When is my child's assessment time?**

All assessments designated dates & times are listed on our website ([acworthbasketball.com](http://acworthbasketball.com)) and your receipt upon registration.

**How do I sign up to be a head coach or assistant coach?**

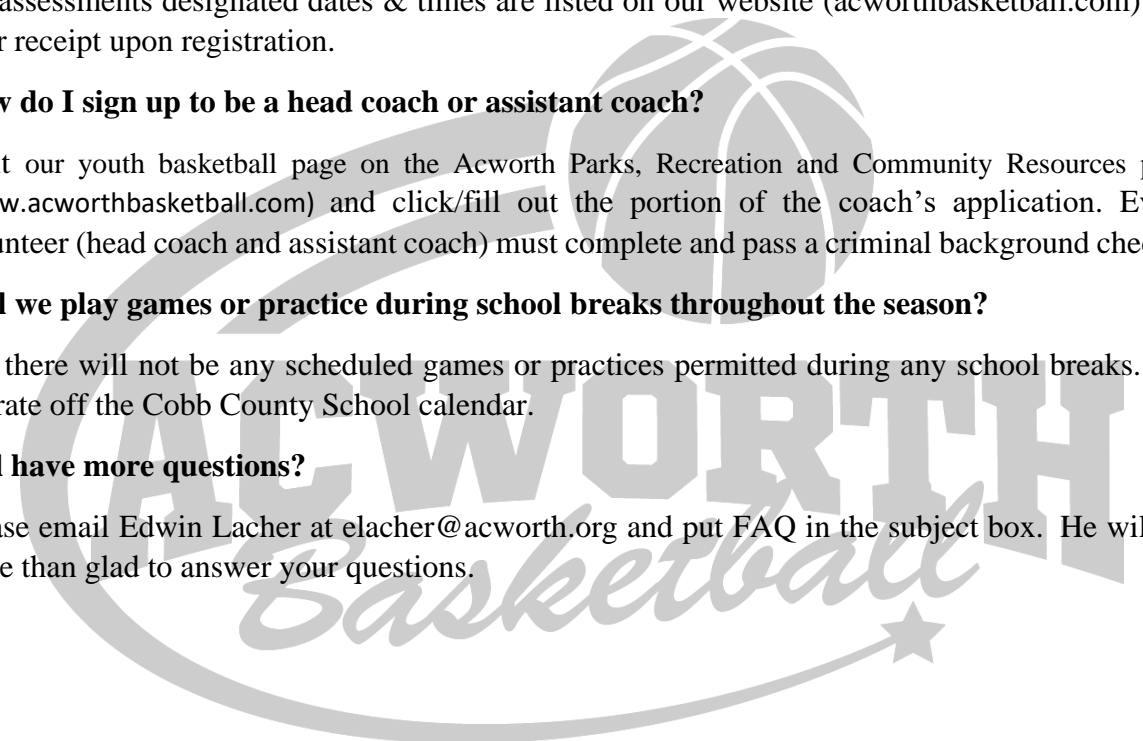
Visit our youth basketball page on the Acworth Parks, Recreation and Community Resources page ([www.acworthbasketball.com](http://www.acworthbasketball.com)) and click/fill out the portion of the coach's application. Every volunteer (head coach and assistant coach) must complete and pass a criminal background check.

**Will we play games or practice during school breaks throughout the season?**

No, there will not be any scheduled games or practices permitted during any school breaks. We operate off the Cobb County School calendar.

**Still have more questions?**

Please email Edwin Lacher at [elacher@acworth.org](mailto:elacher@acworth.org) and put FAQ in the subject box. He will be more than glad to answer your questions.



# Volunteer Coaches

**\*All coaches are required to complete a criminal background check & must adhere to the Acworth Basketball Coaching Expectations and Responsibilities\***

I understand that my responsibilities as a volunteer coach are of great importance and that my actions have the potential to significantly influence the young athletes I coach. Therefore, I promise to uphold the following expectations of the athletes and integrity of the league.

All participants shall:

- Have an informed and fair coach.
- Play as a child and with the expectations of a child.
- Participate in safe and healthy environments.
- Have proper preparation for participation in the games and practices.
- Have an equal opportunity to strive for success.
- Have fun playing basketball.

I also promise to conduct myself in accordance with the Parent Code of Conduct and following expectations outlined here:

- I will treat each athlete, opposing coach, official, parent and the League Coordinator with respect and dignity.
- I will be a role model for the players by displaying and teaching: good sportsmanship, appropriate, conflict resolution, and effective communication.
- I will hold my players responsible for cleaning up after themselves.
- I will do my best to promote the fundamental skills, teaching, evaluation techniques, and strategies to help my team mature as basketball players.
- I will become thoroughly familiar with the rules of the league and my division.

Consequences of misconduct:

- Technical fouls and/or ejections due to coach's misconduct may result in game suspensions or removal from league indefinitely.
- Accumulation of three (3) technical fouls due to coach's misconduct will result in expulsion from coaching for the remainder of the season.
- The League Coordinator and/or City of Acworth staff has the authority to issue necessary disciplinary action related to coach's misconduct or inappropriate representation of the league.

# Parents

**City of Acworth  
Parks, Recreation, & Community Resource Department  
Parent Code of Conduct**

1. I will help the coach aid my child by making certain he/she is on time and properly equipped for all practices and games.
2. I will support the team, division, and league, as they strive to give my child a positive experience. I understand that my child's coach has volunteered to spend countless hours of their personal time with my child.
3. I will abide by the following rules at all Cobb County School Systems facilities:
  - No food, drinks (including water), or gum are allowed in the gymnasium areas.
  - No roller shoes of any kind are allowed in the gymnasium areas.
  - No weapons of any kind are allowed on school premises.
  - Alcohol and tobacco products are not permitted on school premises.
  - Violence of any type will not be tolerated on school premises.
  - Always remember, we are guests in their facilities; their supervisors are always in charge.
4. I will respect the officials and coaches, including their authority during games. I will never question, discuss, or confront the officials and/or coaches during or after a game. If I want to talk to the coaches, I will do so at practice.
5. I will refrain from coaching my child or other players during games and practices unless I am an official coach of the team.
6. I will encourage good sportsmanship by demonstrating positive support for all players, coaches, and officials at every game, practice, and other youth sporting events.
7. I will remember the game is for fun; winning should never be placed ahead of the emotional and physical well-being of any child. I expect my child and his/her coach to do the best they can, and that is all I can expect.
8. I will cheer for my child's team in a positive manner; refrain from being negative toward the opposing team, the officials, coaches, or recreation personnel.
9. I will support all coaches and officials working with my child to encourage a positive and enjoyable experience for all.
10. I will remember that the game is for its participants; not the adults.
11. I will remain in the spectator area during game play and practices as well as cooperate with all recreation personnel.
12. I understand no profanity, or any inappropriate language will be tolerated under any circumstance before, during or after an Acworth Youth Basketball League event and that if I choose to use profanity during these times, I will be removed from the gymnasium.



# Acworth Parks, Recreation & Community Resource Department

Edwin Lacher

City of Acworth, Recreation Coordinator

4361 Cherokee Street

Acworth, GA 30101

(Website) [www.acworthbasketball.com](http://www.acworthbasketball.com)

(Email) [elacher@acworth.org](mailto:elacher@acworth.org)

(Office) 770-917-1234

Daulton Hill

City of Acworth, Assistant Recreation Coordinator

4361 Cherokee Street

Acworth, GA 30101

(Website) [www.acworthbasketball.com](http://www.acworthbasketball.com)

(Email) [dhill@acworth.org](mailto:dhill@acworth.org)

(Office) 770-917-1234

